

SILOAM MISSIONARY HOMES

P.O. BOX 705, SNOW CAMP, NC 27349 (919) 376-6390

"providing temporary missionary housing, permanently"
SEPT/OCT 1993

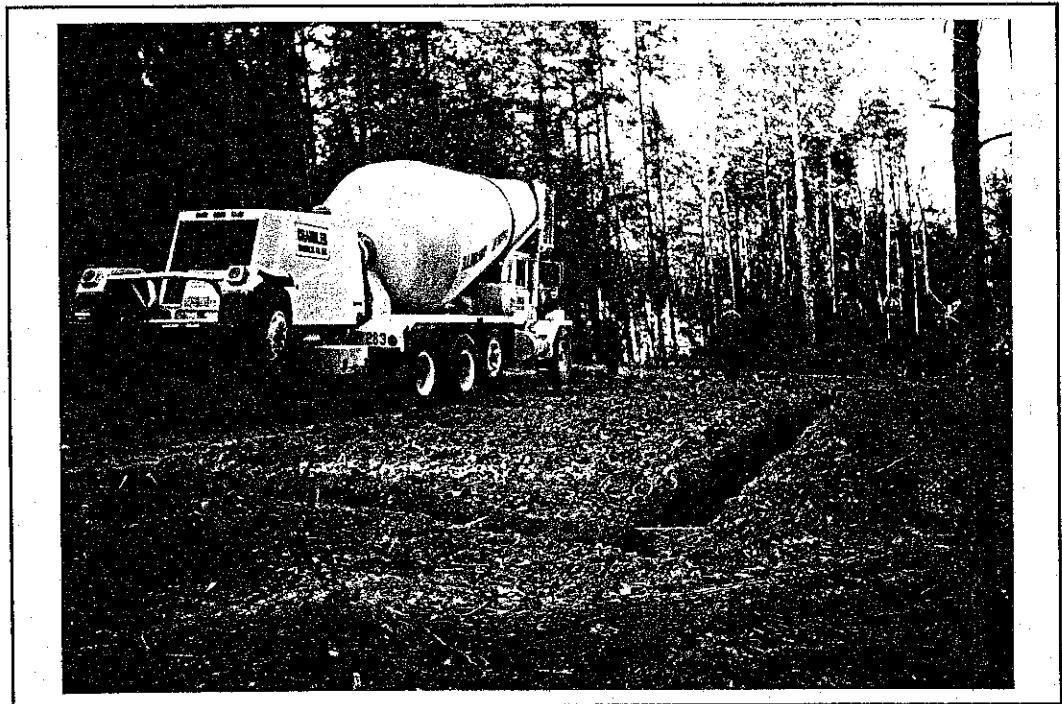
We were anticipating digging the footers for the duplex when I received a phone call. The person on the other end wanted to know what was our next step? He said he had an individual who wanted to help. Praise the Lord, the footers were paid for before they were dug!

Luke 6:48: "He is like a man which built an house, and digged deep and laid the foundation on a rock, and when the flood arose, the stream beat vehemently upon the house, and could not shake it: for it was founded upon a rock."

This verse came to mind as we have since poured the concrete and are waiting to start laying block for the foundation.

We had a drive put in up to the duplex, and stone put onto the driveway. The area for the septic lines have been cleared, an outside security light put at the entrance way, and the temporary electric power installed.

It's so exciting to see the home going up! We continue to give God the Glory!



FROM THE DIRECTOR

Dear Friends of Siloam,

The property is changing so quickly, it is humbling to see God at work. Today I am meeting with a contractor about heading up a work crew to lay the blocks for the foundation.

We appreciate so much the time various people have spent helping us with seeding, and cutting trees, and for the Christian fellowship, which has been such an encouragement!

Siloam Missionary Homes wants to share in this newsletter some of the feelings that missionaries have when they are on furlough. I hope this will help you better understand the needs that they have. I know you will enjoy the article, "Furlough, A Challenge and An Adventure."

A couple of weeks ago, I received a letter from a missionary family in the Philippines telling us how thankful they are that we are building these homes, and that they would like to plan to stay at SMH when they are on furlough-two years from now.

I want to say "Thank You" once again to all of you for your input in this ministry. I feel that just "Thank You" sometimes seems so inadequate because of all your sacrificial giving.

Because of Christ,

Larry

Larry George
Director

Ha Ha's!

"Just remember this, my boy," said the used car salesman to his newest trainee, "always be sincere, whether you mean it or not."

SPECIAL NOTE OF INTEREST

SILOAM MISSIONARY HOMES wanted to let you know that there is a clause in our by-laws (which is required by IRS guidelines) that states that if we would decide to disperse as a mission, all monies and property would go to a "like ministry," meaning a ministry that is structured like we are and provides the same service. We want our supporters to realize that under no circumstances will your money be used for anything other than missionary housing.

Although we have no such plans to disperse, we feel that it is good to let you know where we stand.

NEEDS

I have had many people call or write us and ask for specific needs. A few are listed below.

1. PRAY - Please pray for us, that God would grant us wisdom and strength.
 2. STORAGE BUILDING - We are in need of a building to store supplies, tools, etc. We have plans to use the logs which are being cut into lumber to make a 24'x24' building. But for now, a 10'x12' utility building would help. We have found a used one for \$450.00.
 3. TRACTOR - A tractor suitable for using a bush hog and a back blade. SMH has been using my truck to pull logs, etc... It is taking it's toll. I have found a Ford tractor for \$5,000.
 4. FENCE - We need to start fencing in the property and need approximately 4,000 ft.
 5. LABORERS - We are making plans to start putting up the structure, but need your help. If you would be interested, please let know.
-

Furlough, A Challenge and an Adventure

Byron & Becky Stucky, missionaries with New Tribes Mission, have been in the Philippines sixteen years. Most of that time they have spent planting churches among the Kankanaey tribal people on the island of Luzon. This interview took place shortly before they left to go on furlough.

"WHAT DO YOU WANT TO DO WHEN YOU FIRST GET HOME?"

Becky: It's hard to say what I want to do. Things are so overwhelming when you first get home. The United States feels so big, so vast. But I do look forward to traveling, sight-seeing, and the different varieties of ice cream!

Byron: I look forward to seeing relatives. Our kids are looking forward to getting their driver's licenses. A nice tender steak sounds good, too!

"BECKY, SINCE THINGS TEND TO FEEL OVERWHELMING AT FIRST, IS THERE ANYTHING THAT COULD MAKE YOUR TRANSITION INTO LIFE AT HOME EASIER?"

It helps to have a bit of time to rest before we start getting involved in things. It makes a big difference when there is someone who will just be a friend. It is hard to be put on a pedestal. Missionaries are people just like you.

"WHAT KINDS OF THINGS DO YOU NOTICE WHEN YOU GET HOME?"

It's the little things that often stand out. In the Philippines the paper money is a different color for each denomination. Some are blue, some red, some orange, some green, and some purple. It seems different to have all the bills green here.

"IS IT HARD TO LEAVE THE PHILIPPINES?"

There is a sadness about leaving since Lisa has finished high school and will not return with us for our next term. But, it is also exciting to see her decide what to do with her life.

"WHAT KINDS OF THINGS CAN PEOPLE PRAY ABOUT FOR MISSIONARIES THEY KNOW WHO ARE GOING ON FURLOUGH?"

Pray for wisdom in planning for all the needed preparations, as time always seems to be a premium. Pray for health. It is easy to get run-down from all the extra activity of preparation, besides the regular jobs that still need to be done. Pray for finances for tickets and other expenses involved in going. Pray for readjustment back into the home culture. Pray for openness to the Lord about when and where to share about our mission work. Pray for family members during this time of change, as it will mean a new home, making new friends, and for the children, going to new schools.

"IS THERE ANYTHING ELSE YOU WOULD LIKE TO SHARE WITH OUR READERS?"

Becky: Furlough is a challenge and an adventure. When ours is over, I would like to have made a difference in someone's life.

Byron: One of my deepest desires is to see people who would take up the burden of praying, not only for us but also for the Kankanaey believers.

—taken from Pacific Challenge and printed by permission of New Tribes Mission

HONOR/MEMORIAL GIFTS

Given by

In Honor Of

Ken Frazier

Dorothy & Howard Frazier

Our church Sunday School class got together last Saturday evening for a hay ride and bonfire out at SMH property. We had a great time of fellowship around the fire, a time of sharing and prayer. We ate hot dogs, s'mores (I'm not sure of the spelling - you know, graham crackers, roasted marshmallows and chocolate bars), and cake.

I think everyone had fun - I know we did. It was great to be able to use the property again.

ON THE ROAD

We have been invited to attend a missions conference to display our literature at Hines Chapel, in McLeansville, N.C. November 11-14th. Please pray that it will be a beneficial time for us, to spread the word about what we are doing.



Dear Coffee Club Members,

Time for another newsletter, and we are as busy as ever! We did take a day off last week. Rachel had a volleyball match in Wilmington, N.C. and so we drove down there for the games, and then spent the night in a hotel at the beach. It was beautiful-so peaceful. Not a lot of people since most people head for the mountains to see the changing leaves this time of year. Anyway, we got to walk along the seashore, the kids got into the water for a little while, we even picked up a couple of shells. It was great!

Rachel is finished with volleyball season now, and is looking forward to basketball which starts the first week of November. Abbey has just two more games of soccer. They have done real well, and are tied for first place.

A little note for those of you who love "specialty coffee" like I do, but don't like to pay the high price. You can get creamers that are different flavors to add to your coffee. We enjoy that!

We welcome new Coffee Club Members:

Jim and Tammy Speicher

and the following SS classes from Apple's Chapel Christian Church:

Couples for Christ
Dynamic Disciples

Your "Coffeemate,"

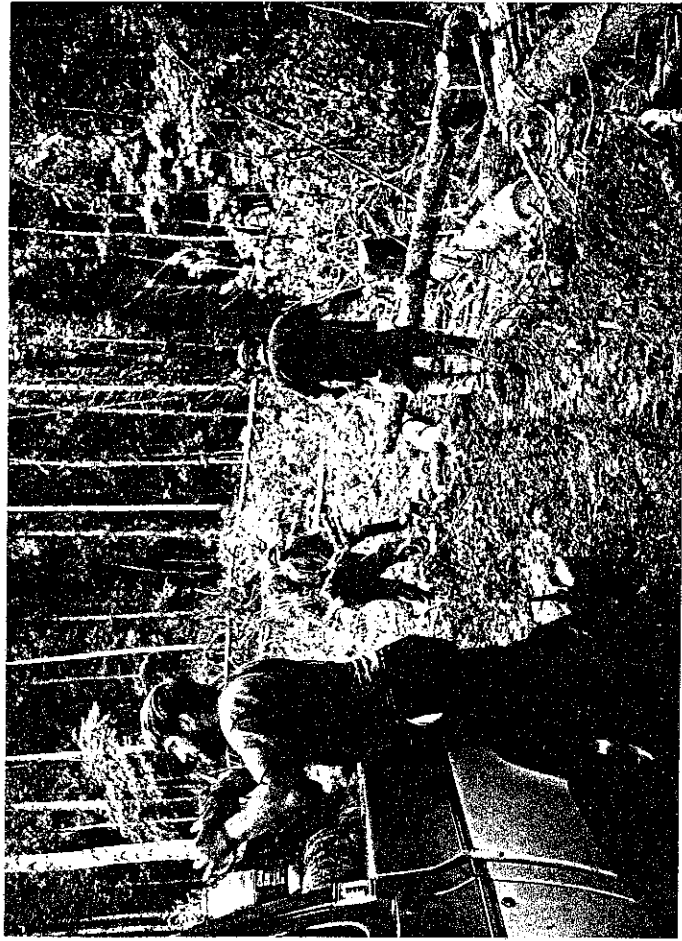
I would like to make a one time donation, which is enclosed.

I would like to make a one time donation for Phase I building at \$50 per block in Honor / Memory of (circle one):

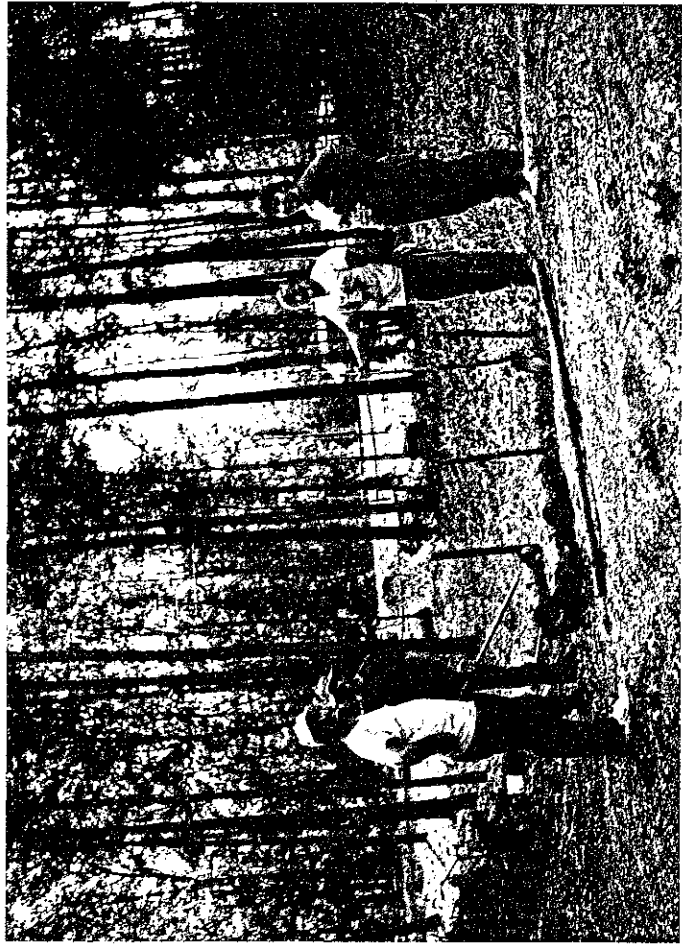
I would like to help provide temporary housing for missionaries by joining the Coffee Club. Each month I will help support SMH with a pledge of:

- \$15.00
- \$25.00
- \$50.00
- \$ other

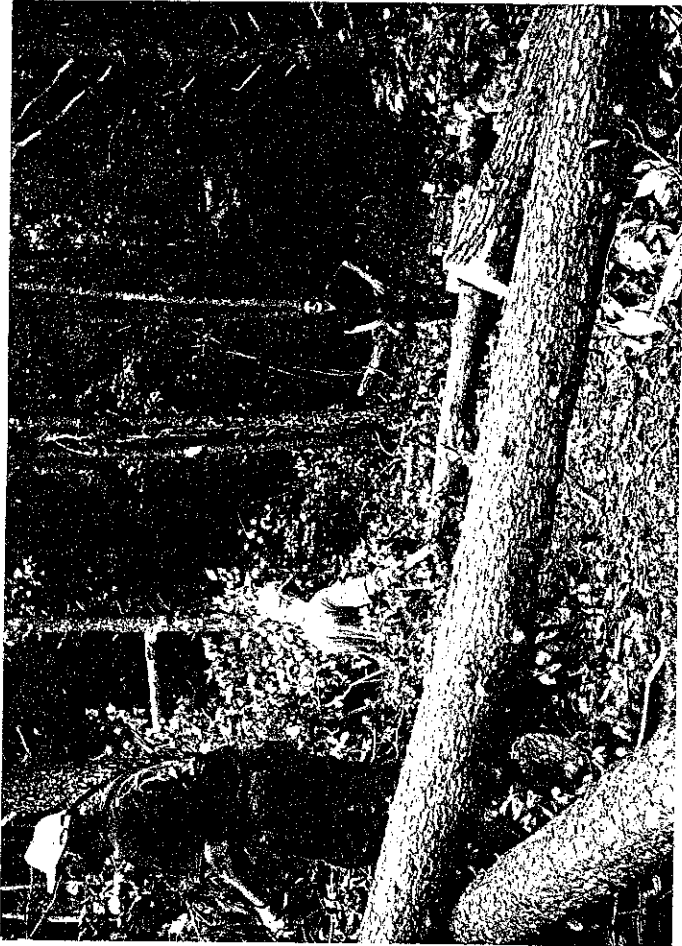
NAME _____
 ADDRESS _____



**THANK YOU,
APPLE'S
CHAPEL
and
BETHEL
BAPTIST**



I arrived on the property Saturday morning, September 18, at 8:30 a.m. (a time when most people are still snoozing) to find a large group of men and ladies from Apple's Chapel Christian Church in Gibsonville, and Bethel Baptist Church in Graham, ready and waiting to begin cutting trees and sowing grass.



You did more in one day than we can get done in a month of Saturdays! Thank you for all your labor, the good fellowship, and your love. May God richly bless you all for helping us here at SIOAM MISSIONARY HOMES!